

JM-CHECK-02

CK3-BB-ALB-150



ALUMINIUM BRONZE LIFT TYPE CHECK

Bolted Cover, Flanged
DN10/15 – DN300 (1/2" - 12")

John Mills Valves was founded in 1828 and since then has been engaged in the manufacture and supply of valves for the Offshore and Marine markets. We offer a wide range of gate, globe, check and ball valves in bronze and aluminium bronze.

On site at Newcastle we have our own pattern shop, foundry, machine shop, assembly and testing facilities, so we can respond quickly and competitively to customers' needs. Our ISO 9001 Quality Assurance system ensures full traceability and control of quality from quotation through to final despatch.

Description

Aluminium Bronze Lift Type Check Valve, Bolted Cover, Metal to Metal Seating, Non Asbestos Joint, BS 5414 Design.

Flanged & Drilled BS 5154 PN 16 OR Flanged & Drilled ASA 150 RF or FF, Flanges to ANSI B 16.5, Face to Face BS 5154.

Options: Soft Seat Disc. Anti flutter Spring Inconel X 750, Alternative Trim Available – Monel, Bolting available in alternative materials or plated.

Maximum Working Pressure

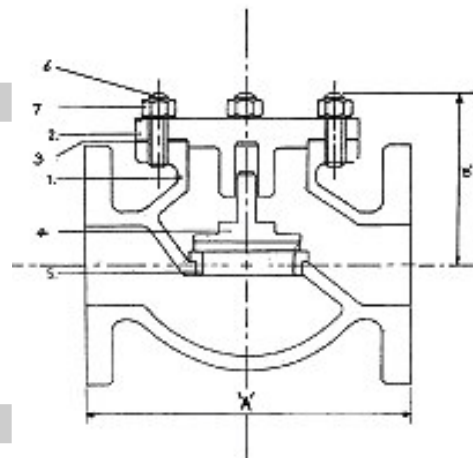
(Subject to end connection)

PN16, P25, PN40
Class 150/300

Materials

1	Body	Aluminium Bronze ASTM B148 C95800 / BS 1400 AB2
2	Cover	Aluminium Bronze ASTM B148 C95800 / BS 1400 AB2
3	Disc	Aluminium Bronze ASTM B148 C95800 / BS 1400 AB2
4	Fasteners	Steel* ASTM B193 / 194 B7 / 2H
5	Seat	Integral ASTM B148 C95800
6	Joint	Non Asbestos BS7531 Grade Y

* Zinc Plated



Specifications

Nom Bore	1/2"	3/4"	1"	1 1/4"	1 1/2"	2"	2 1/2"	3"	4"	5"	6"	8"	10"	12"
	10/15mm	20mm	25mm	32mm	40mm	50mm	65mm	80mm	100mm	125mm	150mm	200mm	250mm	300mm
A Dim (mm)	108	117	127	146	159	190	216	254	292	330	356	495	622	698
B Dim (mm)	60	70	70	90	100	105	110	125	150	175	200	250	300	360

Flanges to ASA 150 RF or FF ANSI B16.5 or B16.24

Unless otherwise requested by customer or valve specification, all valves manufactured by John Mills Valves will be fully tested to AP1598.

The information on this data sheet is accurate to the best of John Mills Valves knowledge, however we reserve the right to alter the product specification at any time. For any specific updated detail, please contact us.

John Mills Valves, 509 Shields Road, Walkergate, Newcastle Upon Tyne, NE6 4PX

Tel: +44 (0) 191 265 6550

Fax: +44 (0) 191 265 1002

E-mail: sales@johnmills-valves.com Website: www.johnmills-valves.com

Revision No: 1
17.04.07